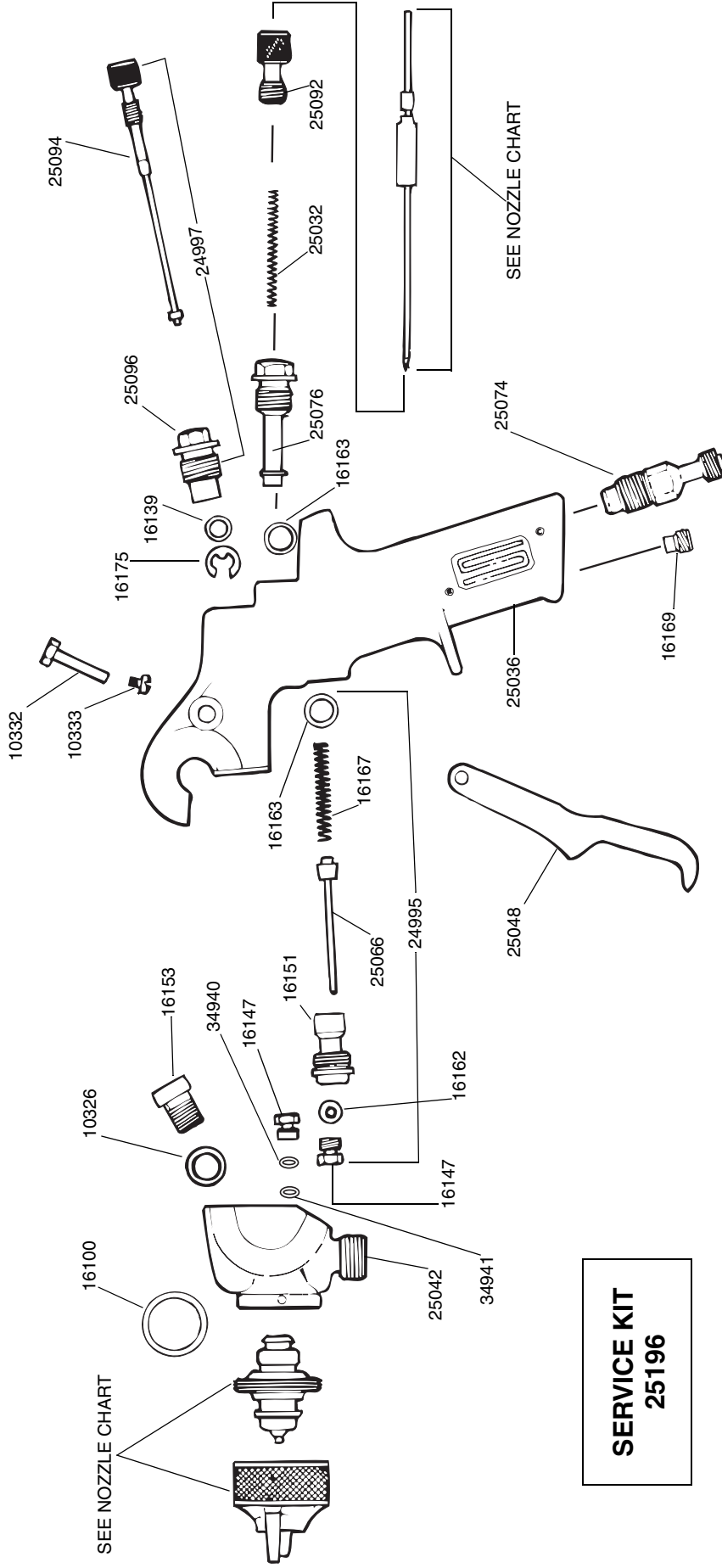


MODEL 775 SPRAY GUN

SHARPEE
A GRACO COMPANY



SEE OTHER SIDE FOR PART DESCRIPTION AND MODELS AVAILABLE

PART NO.	DESCRIPTION	PART NO.	DESCRIPTION
10326	Head Attachment Gasket		Fluid Needle Assy (See Chart Below)
10332	Trigger Shaft	24995	Air Valve Assembly
10333	Trigger Screw	24997	Spray Width Adjuster Assy.
16100	Tip Gasket	25032	Fluid Needle Spring
	Air Cap (See Chart Below)	25036	Gun Handle
	Fluid Tip (See Chart Below)	25042	Gun Head
16139	Spray Width Control Packing	25048	Trigger
16147	Packing Nut	25066	Air Valve
16151	Air Valve Cage	25074	Air Inlet Nipple
16153	Head Attachment Screw	25076	Material Control Bushing
16162	Air Valve Packing	25092	Material Control Knob
16163	Air Valve Cage Gasket	25094	Spray Width Control Knob & Valve
16163	Mat. Control Bushing Gasket	25096	Spray Width Control Body
16167	Air Valve Spring	34940	Packing
16169	Plug	34941	Packing Seal
16175	Spray Width Control "E" Clip		

AIR CAP AND FLUID TIP COMBINATIONS FOR MODEL 775 SPRAY GUN

MODELS AVAILABLE	AIR CAP	FLUID TIP	FLUID NEEDLE	AIR CONSUMPTION	REMARKS
6810	16101	16126	24976	4.0 CFM @ 50 PSI	REQUIRES ONLY 1 H.P. COMPRESSOR
6815	16111	16128	24971	11 CFM @ 50 PSI	ACRYLIC URETHANE FINISHING
6820	16108	16126	24976	10.8 CFM @ 50 PSI	HIGH SPEED PRODUCTION
6822	16116	16128	24971	11.0 CFM @ 50 PSI	LOW V.O.C. ALL PURPOSE
6824	16118	16128	24971	11.0 CFM @ 50 PSI	LOW V.O.C. CLEARS
6830	16109	16125	24971	15.7 CFM @ 50 PSI	PRESSURE FEED HIGH SPEED PRODUCTION
6835	16111	16126	24976	11.0 CFM @ 50 PSI	ALL PURPOSE HIGH SPEED PRODUCTION
6840	16113	16126	24976	11.0 CFM @ 50 PSI	CLEAR COAT APPLICATION
6845	16114	16126	24976	13.8 CFM @ 50 PSI	BASE COATS SINGLE STAGE URETHANE

SHARPE MANUFACTURING COMPANY • P.O. Box 1441, MINNEAPOLIS, MN 55440-1441

1-800-742-7731 • www.sharpe1.com

310587C, 7/2008